

DEM DELIVERS BETTER APPROXIMATE AHD HEIGHTS FOR NSW

The Survey Control Information Management System (SCIMS) is the state's database containing more than 250,000 survey marks on public record across NSW. It was recently updated with Australian Height Datum (AHD) heights (at Class U) sourced from a state-wide Digital Elevation Model (DEM) for more than 127,000 survey marks with existing Class U or null AHD height values. Almost 19,000 marks received an AHD height for the first time, while 100 gross AHD height errors in SCIMS were identified and corrected.

The updated AHD heights are displayed in SCIMS to the nearest metre and provide important benefits for industry, such as enabling the calculation and reporting through SCIMS of the Combined Scale Factor (CSF) and supporting datum modernisation to further improve user access to survey information.

DCS Spatial Services, a unit of the NSW Department of Customer Service (DCS), provides a state-wide DEM with a vertical uncertainty of ± 0.9 m at the 95% confidence level (CL) and a horizontal grid density of 5 m. While it has been available through ICSM's Elevation Information System (ELVIS) as 2 km by 2 km data tiles for some time, the DEM can now be queried directly through a publicly accessible Application Programming Interface (API) to return an AHD height at a specified location.

This article outlines how the new interface has been used to query the coordinates of all marks in SCIMS to retrieve AHD heights from the elevation model, assess the accuracy of these AHD heights and update SCIMS with DEM-sourced heights for survey marks with existing Class U or null AHD height values to yield a homogeneous dataset of known provenance and verifiable quality across NSW.

BACKGROUND

As surveyors, we know that height and elevation data is crucial for a vast number of applications and that the survey control we provide underpins this data. DCS Spatial Services delivers various imagery and elevation products as part of its ongoing custodial responsibilities regarding the NSW Foundation Spatial Data Framework.

Clarifying the terminology used, a Digital Elevation Model (DEM) represents the bare-earth surface void of all natural and built features, while a Digital Surface Model (DSM) captures both the natural and built/artificial features of the environment (i.e. including the top of vegetation and buildings).

Accurate and reliable orthorectified aerial imagery and high-resolution elevation data are critical to effective planning, decision making, change monitoring and risk mitigation across NSW and are utilised by government, industry and the community. Reliable and quality-assured survey control is fundamental to ensuring the integrity of this data, which contributes significantly to economic, social and environmental sustainability in NSW.

As such, the Imagery and Elevation program and project work conducted by the Survey Operations team at DCS Spatial Services supports the following:

- Digital Image Acquisition System (DIAS) program, which captures high-resolution 50 cm Ground Sample Distance (GSD) aerial imagery state-wide.
- Digital Town Imagery Capture (DTIC) program, which captures high-resolution 10 cm GSD aerial imagery over cities, towns and villages throughout NSW.
- Light Detection and Ranging (LiDAR) program, which captures highly accurate elevation data in high-risk areas across NSW.
- Surface Model Enhancement (SME) project (2014-19), which utilised a variety of technology including aerial imagery and LiDAR to create a high-resolution, state-wide DSM.

One of the products provided by DCS Spatial Services is a state-wide DEM with a vertical uncertainty of ± 0.9 m (95% CL) and a horizontal grid density of 5 m. It was produced by a combination of category 1 LiDAR, category 3 LiDAR, 10 cm ground resolution imagery and 50 cm ground resolution imagery. The DEM can now be queried directly through a new publicly accessible API to return an AHD height at a specified location. An API is essentially a connection between computers or between computer programs, i.e. a software interface offering a service to other pieces of software. This is extremely useful when dealing with large amounts of data and/or machine-to-machine processes.

AHD HEIGHT RETRIEVAL FROM THE DEM VIA API

In May 2021, AHD heights from the state-wide DEM were extracted via an in-house developed Python script using a publicly available API called 'public/NSW_5M_Elevation', hosted by DCS Spatial Services on the NSW Spatial Information Exchange (SIX) platform. To obtain a sufficiently large dataset for evaluation of the accuracy of the returned data, every survey mark in SCIMS (including witness marks, destroyed marks and interstate marks along the borders) was submitted to the API for a height retrieval. This included 301,200 survey marks at the time, using their horizontal GDA2020 positions for interrogation.

Due to the enormous number of queries required, and to prevent overload of the server, the submission data was separated into sets of 50 marks for asynchronous retrieval, with a wait timer introduced between sets. Retrieval was an iterative process, as failure rates for the server's identify function were as high as 50% of the submitted set at times (likely caused in part by inferior internet connections while working from home during the COVID-19 pandemic). Failed retrievals were re-added to the submission set for the next iteration and automatically resubmitted until completion. This process took approximately 8 days of continuous processor time.

We found that 872 of the submitted positions returned no data, with 46 of these located on Lord Howe Island (which is not covered by this DEM nor true AHD). The remainder (apart from a few anomalies) were located along the Queensland, South Australian and Victorian borders. Closer inspection revealed that all these locations were outside the extent of the DEM (too far into the neighbouring states), noting that SCIMS includes several interstate survey marks close to

the NSW border and that the Australian Capital Territory is entirely covered by the DEM.

QUALITY ASSESSMENT OF THE DEM ACROSS NSW

The lower-accuracy AHD heights retrieved from the DEM were compared to existing high-accuracy AHD heights of survey marks on public record in SCIMS that satisfied the following criteria:

- Established (Class D or better) horizontal GDA2020 coordinates.
- Accurate (Class B/LD or better) AHD height.
- Mark at or near ground level (no towers, fence posts, pillars, cairns, reference trees etc.).

The prerequisite for established horizontal coordinates at each survey mark is equally as important as an accurate AHD height,

as local terrain undulations can quickly alter the height returned from the DEM. Similarly, selecting marks that are not on the natural surface (above or below ground) renders the comparison invalid. In this instance, 34% of the survey marks in SCIMS (102,437 of 300,328 that returned heights) met the required criteria to be included in the comparison.

Figure 1 illustrates the distribution of these survey marks across the state, while Figure 2 shows those in Greater Sydney. The threshold for a successful comparison was set at ± 0.9 m, which is the quoted vertical uncertainty of the DEM (95% CL). It was found that the calculated height differences between the DEM and SCIMS were within this threshold for 95,866 survey marks, i.e. 93.6% of the comparison set (indicated in blue in Figures 1 & 2).

The obtained pass rate of 93.6% is slightly lower than the quoted vertical uncertainty of the model (95%), which can be attributed to two main reasons:

- The comparison did not consider the vertical position of the survey mark above or below ground level (typically up to 0.2 m in either direction for an appropriately placed mark). This was deemed unnecessary as the result was fit for purpose and this information was only available for 3.7% of the comparison set.
- The horizontal density of the DEM is 5 m, so AHD heights at survey marks located on undulating terrain may show some discrepancy, depending on the position of the mark relative to the sample points of the model (which are used to interpolate the height at the specified position).

For at least the last 5 years, DCS Spatial Services has recorded the mark-to-ground-level offset at each survey mark occupied or inspected as part of normal field operations. To examine the effect of

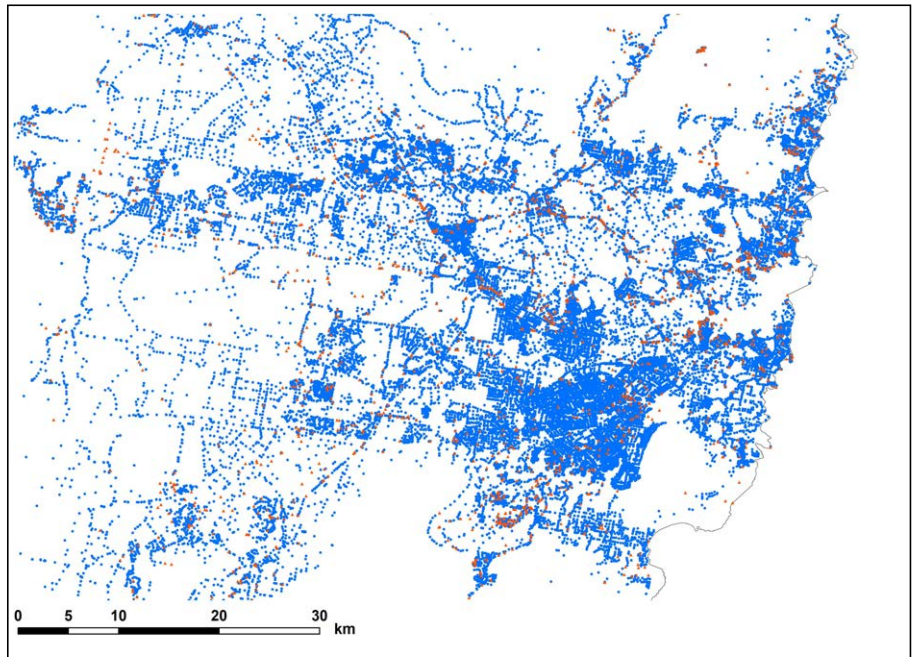


Figure 2: Location of SCIMS marks used to assess the quality of the DEM across Greater Sydney, with those meeting the ± 0.9 m threshold indicated in blue.

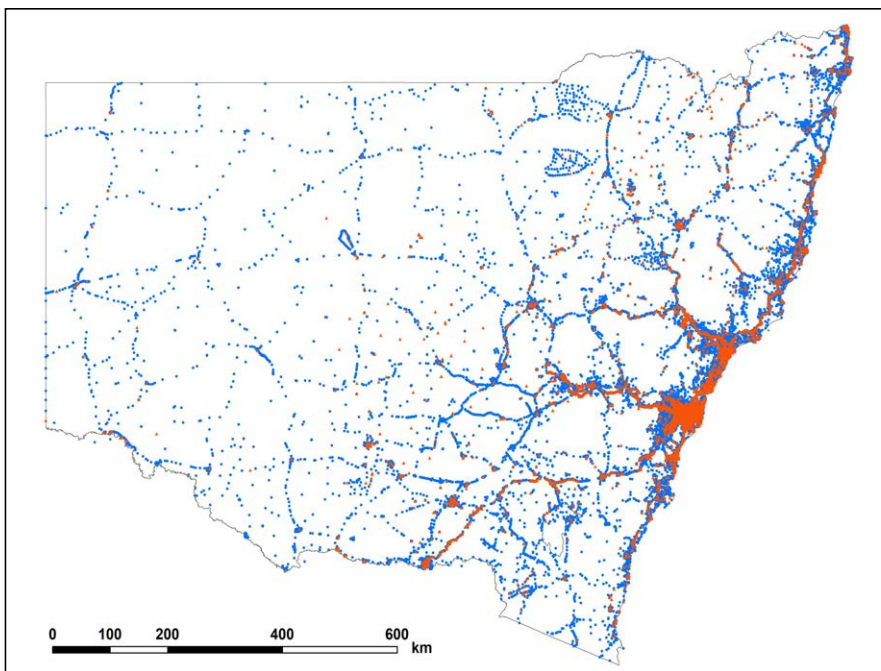


Figure 1: Location of 102,437 SCIMS marks used to assess the quality of the DEM across NSW, with those meeting the ± 0.9 m threshold indicated in blue.

including such metadata, the analysis was repeated for those 3,849 survey marks in the comparison set with available mark-to-ground-level information. This smaller sample exhibited a pass rate of 97.1% when the mark-to-ground-level correction was applied and a 96.2% pass rate when it was ignored. Together with the earlier analysis, this result was deemed fit for purpose, confirming the stated DEM uncertainty.

It is worth noting that 960 (14.6%) of the 6,571 marks that failed to meet the ± 0.9 m threshold (indicated in orange in Figures 1 & 2) are located within 20 m of the centreline of a major highway or motorway. This can be explained by rapid changes in topography often occurring along the cross-section of the road corridor, including embankments and cuttings. Furthermore, some of these roads are extremely steep, such as the Great Western Highway between Penrith and Glenbrook. Finally, 1,082 (16.5%) of all the marks failing to meet the threshold are specified as 'destroyed' in SCIMS, indicating that their AHD height may relate to a time prior to road or other construction earthworks altering the topography.

COMPARISON TO INDEPENDENT, NATIONAL DEM

Following initial height retrieval, we noted that the DEM returned an AHD height that was significantly different (> 20 m, e.g. a typical contour) from the value in SCIMS for 787 survey marks with an existing Class U AHD height. This was investigated by querying Geoscience Australia’s national 1-second Shuttle Radar Topography Mission (SRTM) DEM for the entire dataset via another API. We then compared the two DEMs to each other and to SCIMS. Wherever the NSW DEM value differed from SCIMS by more than 10 m (in 4,690 cases), the 3-way comparison was recorded.

Any AHD height difference exceeding 20 m between the two DEMs was then manually investigated, resulting in 45 of 108 marks (41.7%) to be identified for exclusion from the following SCIMS update. All these excluded marks were located where an open pit mine had subsequently been created. Any other large differences between the two DEMs were a result of the coarser resolution of the SRTM DEM (1 arcsecond equates to approximately 30 m), e.g. for Trigonometrical Station (TS) pillars located on the side of a cliff, the SRTM DEM sometimes returned the height partway down the cliff. Most remaining large differences between the NSW DEM and SCIMS appeared to be the result of transcription errors in the SCIMS height (e.g. 1,000 m instead of 100 m) or rounding to the nearest contour when the heights were initially entered into SCIMS.

IMPLEMENTATION OF DEM-SOURCED AHD HEIGHTS IN SCIMS

Reliable and quality-assured survey control is fundamental to ensure the integrity of the imagery and elevation products delivered by DCS Spatial Services. However, this connection can work both ways as these products can then be used to improve survey control information on public record in SCIMS. In this case, we updated SCIMS with suitable DEM-sourced AHD heights (at Class U) to yield a homogeneous dataset of known provenance and verifiable quality across NSW. This essentially improved approximate AHD height values in SCIMS that were initially obtained from the nearest contour on 1:25,000, 1:50,000 and 1:100,000 topographic maps to DEM-sourced values with sub-metre uncertainty. Displaying these AHD values to the nearest metre in SCIMS (Class U resolution) fits well with their 0.9 m uncertainty.

Noting the uncertainty of the state-wide DEM, survey marks were only selected for AHD height update if their existing AHD height in SCIMS was null or Class U. Furthermore, it is important to consider that SCIMS holds records for a wide range of different monument types. A location descriptor also indicates whether the mark was placed in the ground or on a structure. As such, further filtering was applied to limit the height update to only those marks that are likely to be at (or near) ground level.

Consequently, several monument types (Table 1) and mark location descriptions (Table 2) were excluded from the update. As an additional precaution, any TS whose name included the word ‘TOWER’ was also excluded from the update.

Table 1: Monument types excluded from the SCIMS update.

AERIAL	FIRE TOWER	OBELISK	RESERVOIR
BEACON LIGHT	LIGHTHOUSE	RADAR TOWER	SPIRE
CHIMNEY	LIGHTNING ROD	RADIO MAST	TOWER
FLAGSTAFF	MAST	RADIO TOWER	WIND VANE

Table 2: Mark locations excluded from the SCIMS update.

BUILDING OR STRUCTURE
RESERVOIR OR TANK
SILO
OTHER STRUCTURE

It should be noted that, unfortunately, RESERVOIR OR TANK was initially missed from the list of excluded mark locations. This resulted in 30 trig stations located on reservoirs incorrectly receiving a height at ground level, which has since been revisited and corrected.

Once the update set had been filtered in this way and before the SCIMS update was executed, a final test was performed to check for trends. In general, we found that the data was normally distributed and 99.3% of the AHD heights included in the update were within 20 m of their existing SCIMS values (Figure 3). A 20 m error in height corresponds to approximately a 3 parts per million (ppm) error in the reduction of ground distances to the ellipsoid between two marks, which was deemed acceptable and fit for purpose.

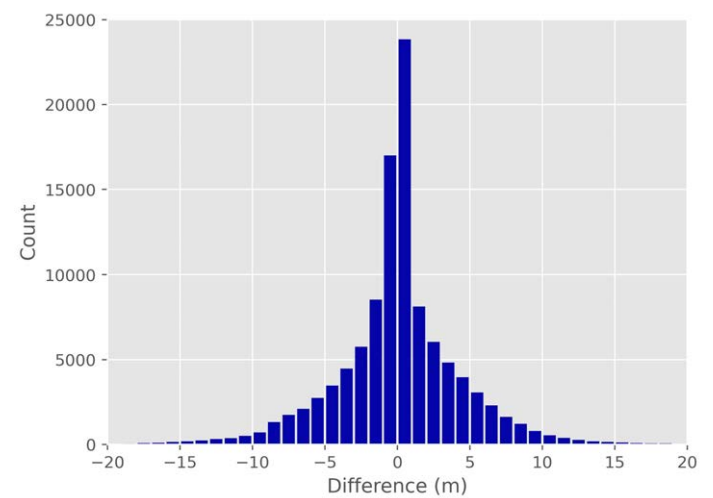


Figure 3: Histogram of the difference between DEM-sourced AHD height and existing AHD height in SCIMS (723 outliers exceeding ±20 m not shown).

As previously mentioned, height differences larger than 20 m were generally attributed to either of the following two reasons:

- Transcription or rounding errors in the existing SCIMS value (corrected by the update).
- Marks located where an open pit mine had subsequently been created (excluded from the update with mark status updated in SCIMS as ‘destroyed’).

SCIMS UPDATE RESULTS

This SCIMS update delivered DEM-sourced AHD heights at Class U for 127,154 survey marks, of which 18,854 marks (14.8%) were assigned an AHD height for the first time (Figure 4). Putting this large number into perspective, this means that 42.3% of the survey marks that returned a DEM-sourced AHD height during the initial retrieval were updated during this process. This is a huge improvement in the access to reliable, approximate AHD heights of known quality in SCIMS, ensuring that nearly every survey mark in NSW has an AHD value of 0.9 m uncertainty or better.

When inspecting Figure 4, it is worth noting the near-perfect straight line of AHD height updates to survey marks running from north-west to south-east through the centre of the state. Despite appearing to be an artefact, this is a series of marks located along a gas pipeline easement, which connects to the main distribution network on the east coast.

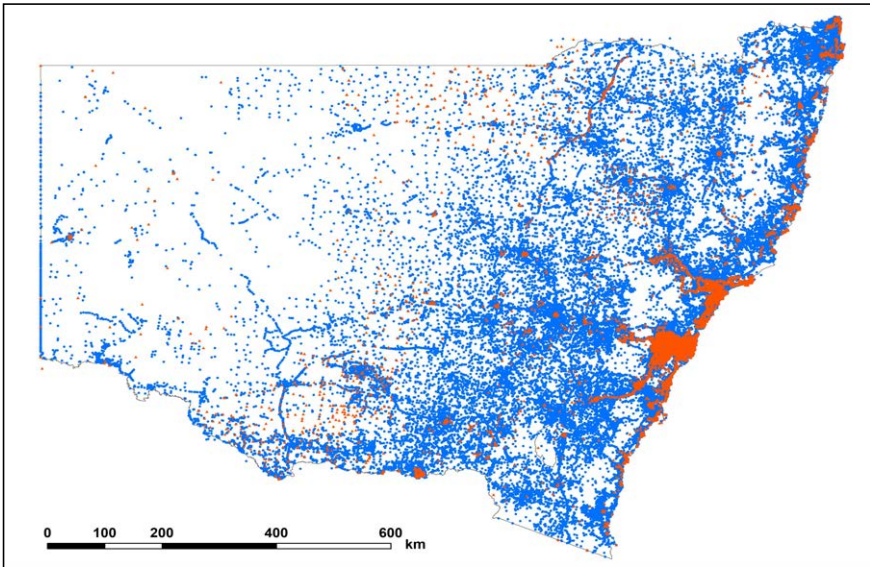


Figure 4: Location of survey marks included in the May 2021 SCIMS update, indicating which marks received an AHD height for the first time in orange.

Minimum (m)	-964.725
Maximum (m)	1022.783
Mean (m)	0.185
Median (m)	0.013
Std Dev (m)	4.228

Table 3: Descriptive statistics of the difference between DEM-sourced and existing AHD height in SCIMS for the update dataset (723 outliers exceeding ± 20 m were excluded from the calculation of the standard deviation).

BENEFITS

These updated AHD heights provide several important benefits such as enabling better calculation and reporting of the Combined Scale Factor (CSF) with confidence at virtually all survey marks (99.98%) in NSW through SCIMS. CSFs are now typically up to 1.5 ppm better because heights have been improved from 10-metre to sub-metre accuracy. The DEM-sourced AHD heights also support datum modernisation efforts through the ongoing readjustment of legacy

Table 3 summarises descriptive statistics related to the update dataset, showing the minimum, maximum, mean and median differences between the new and existing AHD height in SCIMS along with the resulting standard deviation. The existence of large outliers, as previously discussed, is confirmed by the difference between the mean and median values.

terrestrial data hosted by DCS Spatial Services for inclusion in the growing GDA2020 state adjustment by facilitating the rigorous reduction of terrestrially measured distances to the ellipsoid. This translates into more survey marks in SCIMS being assigned a Positional Uncertainty (PU), directly benefitting the profession and our customers.

THE SURVEYORS' TRUST
Collective investment in knowledge

www.thesurveyorstrust.org.au

Do you get your plan royalties?
Do you know how much you get each year?
How do you spend it?
Would you like to do something amazing with it to help the industry?

Overview

The Surveyors' Trust collects royalties from surveyors' plan sales, using funds to enhance surveyors' expertise and industry recognition. The goal is to sustain Australia's surveying and spatial sector, safeguard intellectual property, and create a thriving community of spatial professionals.

Role in the Industry

1. Funding partner organizations aligned with values.
2. Providing intellectual property training.
3. Advocating for best practices in intellectual property for the spatial industry.

Core values

1. Education: High, consistent standards for all surveyors.
2. Professional Development: Continuous knowledge expansion.
3. Mentoring: Support for less experienced surveyors.
4. Recognition: Acknowledging surveyors' societal contributions.
5. Sharing: Reinvesting royalties for industry advancement.
6. Ethics: Advocating integrity in the surveying and spatial industry.
7. Quality and Innovation: Encouraging high-quality, innovative work.

Importance

The Trust aims to safeguard survey plans, protect surveyors' roles and income, and build a sustainable sector. Ultimately, this fosters a recognized, respected, and rewarded spatial industry.

How it Works:

1. You assign your royalties to The Surveyors' Trust
2. Surveyors create plans.
3. Stakeholders purchase plans, paying royalties.
4. The Surveyors' Trust pools royalties for industry projects.

Scan the code below to view our projects

Become a contributor, contact Simon White at ceo@thesurveyorstrust.org.au

PUSHING THE BOUNDARIES

APAS2024 CONFERENCE

HYATT HOTEL, CANBERRA, 18-20 MARCH 2024

Presented by the
Association of Public Authority Surveyors
www.apas.org.au

Furthermore, this process was able to identify and correct 101 extremely large (100-1,000 m) AHD height errors (Class U) in SCIMS. It follows that retrieved DEM-sourced heights can now also be used to identify gross errors on SCIMS marks with existing accurate (Class B/LD or better) AHD heights. This further contributes to our 'Saving AHD' efforts, which aim to ensure that users have continued and easy access to reliable physical heights and their uncertainties across NSW.

Finally, with SCIMS now holding AHD heights of known quality state-wide, ellipsoidal height was derived by applying AUSGeoid2020 at all applicable survey marks with existing null ellipsoidal height values in SCIMS. During the 6-monthly GDA2020 SCIMS refresh in November 2021, this provided ellipsoidal heights for 267,581 survey marks for the first time, ensuring that virtually all marks in SCIMS now also have an ellipsoidal height. Publishing these values allows surveyors and other users to easily verify that they have set their height datum and/or applied AUSGeoid2020 correctly during both field operations and office processing and reductions.

CONCLUSION

DCS Spatial Services provides a state-wide DEM to the public with a vertical uncertainty of ±0.9 m (95% CL) and a horizontal grid density of 5 m. This DEM can now be queried directly through a publicly available API to return an AHD height at a specified location. This article has described how the API was used to retrieve AHD heights

from the elevation model for about 300,000 survey marks in SCIMS and assess the accuracy of these DEM-sourced AHD heights, thereby confirming the stated DEM uncertainty.

We have outlined how SCIMS was updated with DEM-sourced heights (at Class U) for 127,154 survey marks with existing Class U or null AHD height values to deliver a homogeneous dataset of known provenance and verifiable quality across NSW. This allowed 18,854 survey marks to be assigned an AHD height for the first time, while many gross AHD height errors in SCIMS were identified and corrected.

The updated AHD heights provide important benefits to industry such as enabling the calculation and reporting through SCIMS of the CSF with confidence across all of NSW and supporting the readjustment of legacy terrestrial data in the growing GDA2020 state adjustment. Lastly, ellipsoidal height values were derived using AUSGeoid2020 and published in SCIMS, allowing 267,581 survey marks to receive an ellipsoidal height for the first time. As a result, virtually all SCIMS marks now have both an AHD height and ellipsoidal height.

Jonathon Smith <Jonathon.Smith@customerservice.nsw.gov.au> and Dr Volker Janssen <Volker.Janssen@customerservice.nsw.gov.au> work at DCS Spatial Services, a unit of the NSW Department of Customer Service.



BEHIND EVERY SURVEYOR STANDS A STRONG WOMAN

MARY HARRISON'S UNWAVERING SUPPORT AND IMPACT ON THE SURVEYING PROFESSION IN NSW

Surveying may have been a "bloke's" world, but none got anywhere without a strong woman's support.



The best example of this is my wife, Mary. She admits to knowing little about surveying however her help to the profession is tireless in many ways.

Her interest began with fun at functions; dinners awards nights etc. She is a "people-person". Loves a chat, is interested in the other side of life, hates to see someone standing alone when they could be joining in a conversation with a group.

When it comes to getting things done she is a workaholic. That comes from her Maltese background. Her family came to Australia after WWII with nothing. From an early age, as the oldest girl in the family, she was expected to work with Mum and Dad to support a growing family. A tough upbringing but one that gave her many skills in life which have paid off for myself and the profession as she continues to use those skills for the greater good.

Mary would be as well known a personality in the profession as the staff of the Association and the Institution because of her volunteering on welcome desks at seminars, her greeting to attendees at functions, and many attendances at State, National and International events.

Because of her interest in people, and the above influences in her life, she has been the power behind the scene in my life and involvement with the profession. I am not the best or most successful surveyor in the world, but I enjoy the life it has given me, shared with Mary.

Bob Harrison. OAM JP. B.Surv