



---

Topography and Mapping Programs

# LPI Digital Topographic Database

## Product Description

Version 2

October 2014

A decorative graphic in the bottom right corner consisting of overlapping, semi-transparent blue and white shapes that resemble stylized leaves or petals.

## Documentation and Approvals

### Version history

Date	Version No	Author	Description
30/10/13	1	Leanne Mills	Document compilation
28/10/14	2	Leanne Mills	Contact Update

### Approval

Version No	Name	Role	Sign-off Date
1	Lew Haley	Team Leader, Topography and Mapping	30/10/2013
1	Alan Garside	Manager, Spatial Data Services	30/10/2013
2	Lew Haley	Team Leader, Topography and Mapping	28/10/2014

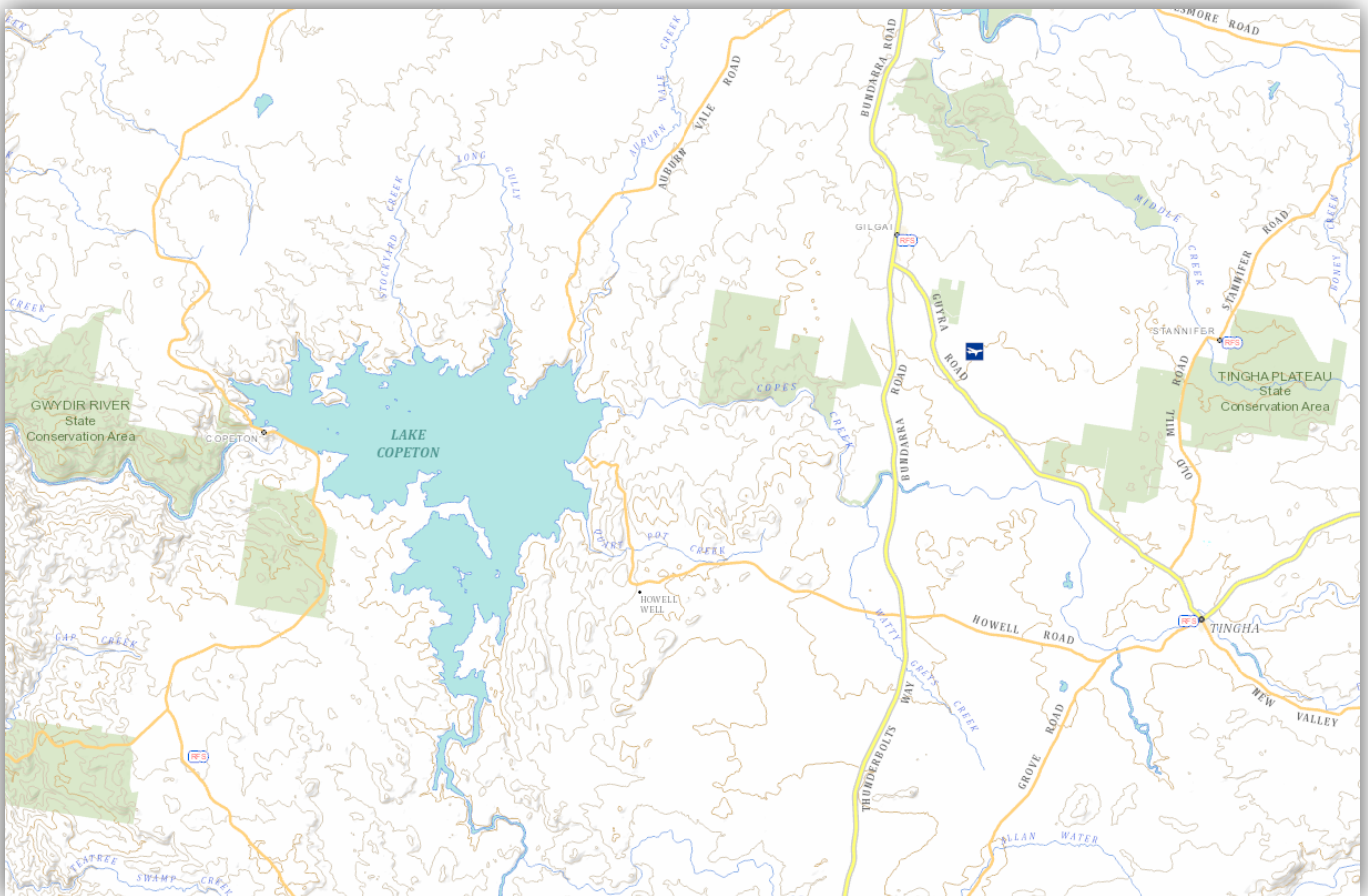
## Table of contents

DTDB Description	4
Features listed by Theme	5
Cultural	5
Hydrography	7
Physiography	8
Transport	9
Further information	11

## DTDB Description

The Digital Topographic Database (DTDB) contains spatial and aspatial data representing the State's topographic features including natural, physical and cultural. It is divided into the four themes: Cultural, Hydrography, Physiography and Transportation. Each of these themes is made up of various Feature Classes (or layers) that contain the relevant spatial data and their associated attributes and relationships.

A more detailed description of the DTDB Data Model and Data Dictionary is available on our website at [http://www.lpi.nsw.gov.au/mapping\\_and\\_imagery/spatial\\_data/topographic\\_data](http://www.lpi.nsw.gov.au/mapping_and_imagery/spatial_data/topographic_data).



# Features listed by Theme

## Cultural

### **BuildingComplexPoint**

A point feature class defining a group of buildings and associated facilities functioning together as a unit.

### **ElectricityTransmissionLine**

A line feature class defining wire or wires supported on poles, towers, or pylons used for the transmission of electricity (ICSM). May also include major power lines laid underground or underwater.

### **GeneralCulturalArea**

A polygon feature class defining general cultural feature types.

### **GeneralCulturalLine**

A line feature class defining general cultural feature types.

### **GeneralCulturalPoint**

A point feature class defining general cultural feature types.

### **Pipeline**

A line feature class defining utility pipelines.

### **PlaceArea**

A polygon feature class defining a named place.

### **PlacePoint**

A point feature class defining a named place.

### **TankArea**

A polygon feature class defining a structure used for the storage of fluids (adapted from ICSM).

### **TankPoint**

A point feature class defining a structure used for the storage of fluids (adapted from ICSM).

**UtilityWaterSupplyCanal**

A line feature class defining an artificial (built) watercourse to convey water for domestic use. These canals are not part of the general hydrographic network. Some sections may be covered, piped or travel underground.

## Hydrography

### AncillaryHydroPoint

A point feature class defining a location that has unique hydrology characteristics, or monitors or controls stream flow, or manages hydrographical spatial data integrity.

### Coastline

A line feature class defining the line of contact between a body of water and the land (ICSM). In particular, the line delineating the interface between land, internal waters and the "Territorial Sea" as defined by the Seas and Submerged Lands Act - No. 161 of 1973 (DTDB Technical Manual).

### FuzzyExtentWaterArea

A polygon feature class representing the approximate extent (bounds) of formally named water features that have relatively indistinct named extent.

### FuzzyExtentWaterLine

A line feature class representing the approximate centreline of formally named water features that have relatively indistinct named extent.

### HydroArea

A polygon feature class defining hydrography feature types.

### HydroLine

A line feature class defining the centreline of a watercourse.

### HydroPoint

A point feature class defining hydrography feature types.

### NamedWatercourse

A line feature class defining the centreline of a named watercourse as a single feature.

## Physiography

### Contour

A line feature class defining the representation of an imaginary line on the ground joining points of equal elevation in relation to the Australian Height Datum (ICSM).

### Distinctive Land Surface (DLS) Area

A polygon feature class defining Distinctive Land Surface features of discrete extent.

### DLSLine

A line feature class defining Distinctive Land Surface features of discrete extent.

### DLSPoint

A point feature class defining Distinctive Land Surface features of discrete extent.

### FuzzyExtentArea

A polygon feature class defining the approximate extent of formally named landforms that have relatively indistinct name extent.

### FuzzyExtentLine

A line feature class representing the approximate centreline of formally named landforms that have relatively indistinct name extent.

### FuzzyExtentPoint

A point feature class representing the approximate centre of formally named landforms that have relatively indistinct name extent.

### RelativeHeight

A point feature class defining the relative height of a cliff face.

### SpotHeight

A point feature class defining a point on the earth's surface, the elevation of which has been related to a datum by ground or photogrammetric survey (ICSM).



## Transport

### AggregatedWay

A line feature class representing a set of road segments that share a common function or characteristic (adapted from GDF). A road segment can belong to more than one Aggregated Way. Aggregated Ways do not have an implied topology; that is, they are not necessarily connected to other Aggregated Ways and do not necessarily form a complete network. Although an Aggregated Way is normally contiguous, this is not mandatory. AggregatedWay features are aggregations of AggWaySegment features that have all the same WayType; WayNumber; RoadNameBase; RoadNameType; RoadnameSuffix values. The term route has been purposely avoided due to potential for misinterpretation.

### AggwaySegment

A line feature class representing a set of road segments that share a common function or characteristic (adapted from GDF). A road segment can belong to more than one AggWaySegments. AggWaySegments do not have an implied topology; that is, they are not necessarily connected to other AggWaySegments, and do not necessarily form a complete network. Although an AggWaySegment is normally contiguous, this is not mandatory. AggWaySegments have same geometries as RoadSegment features. AggWaySegment provides a 'staging class' for the auto generation and maintenance of the AggregatedWay feature class.

### Cableway

A line feature class defining a conveyor system in which carrier units run on cables strung between supports (ICSM).

### ClassifiedFireTrail

A line feature class representing roads and fire trails that form part of the NSW strategic fire trail network as described in the Bush Fire Coordinating Committee, Policy No 1/03 "Guidelines for the Classification of Fire Trails". The fire trail network identifies Primary and Secondary roads and fire trails that are maintained to ensure safe four-wheel drive access to and from fire grounds, as well as identifying dormant fire trails that could be opened or upgraded during emergency events with minimal effort.

### Crossing

A point feature class defining a structure that facilitates the crossing of a road or railway over, under or through another feature.

### FerryRoute

A line feature class defining the approximate route of a regular ferry service.

**Railway**

A permanent way having one or more rail lines which provides a track for cars (vehicles) eg. railway, tramway, monorail, etc.

**RoadNameExtent**

A line feature class representing aggregated road segments that have the same local road name and the segments are relatively contiguous.

**RoadSegment**

A line feature class representing a section of road having common attributes and terminating at its physical end or at an intersection with another road at the same grade (same level).

**Runway**

A line feature class defining; a straight path used for landing and take-off of aircraft (adapted from ICSM).

**TrafficControlDevice**

A structure which controls movement of traffic along a road.

**TransportFacilityLine**

A line feature class defining a facility related to transport.

**TransportFacilityPoint**

A point feature class defining a facility related to transport.

## Further information

For further information please contact:

Spatial Data Services

E: [SDS@lpi.nsw.gov.au](mailto:SDS@lpi.nsw.gov.au)

T: 02 6332 8287



Land and Property Information

1 Prince Albert Road  
Sydney NSW 2000

GPO Box 15  
Sydney NSW 2001  
T: 1300 052 637  
T: + 61 2 9228 6666  
[www.lpi.nsw.gov.au](http://www.lpi.nsw.gov.au)