

## **This FAQ describes how to add the new GDA2020 raster URL(s) offered via the [Spatial Collaboration Portal \(SCP\)](#), for viewing in your GIS/applications.**

The GDA2020 raster service is a proxy URL which simply shifts existing WGS 84-aligned-to-GDA94 cached tiles by the number of pixels required to comply with the NTV2-CPD transformation. The product is supplied as WGS 84-aligned-to-GDA2020 cached tiles.

Existing GDA94-aligned raster and vector services, as well as new GDA2020-aligned 'multiCRS' vector services, are all true ArcGIS REST services. In contrast, the new GDA2020 raster proxies are not true ArcGIS REST services and special instructions for viewing these services are supplied below.

Example URLs:

- GDA94:  
[https://maps.six.nsw.gov.au/arcgis/rest/services/public/NSW\\_Imagery/MapServer](https://maps.six.nsw.gov.au/arcgis/rest/services/public/NSW_Imagery/MapServer)
- GDA2020:  
[https://portal.spatial.nsw.gov.au/tileservicesGDA2020/rest/services/public/NSW\\_Imagery\\_GDA2020/MapServer](https://portal.spatial.nsw.gov.au/tileservicesGDA2020/rest/services/public/NSW_Imagery_GDA2020/MapServer)

For general information on:

- GDA2020 Web services, see [GDA2020 Web Services Information Sheet](#).
- GDA2020 services supported by Spatial Services, please visit our [product and services website](#).
- Adding ArcGIS REST services to a GIS, refer to your software provider or this [Spatial Services website](#).

## **My GIS / application is not described below? What should I do?**

If your GIS or application is not described below, then please contact your software provider to determine the most applicable method to load these services. Your feedback and questions are welcomed to improve this FAQ information. Please provide feedback via the Spatial Services [Customer Hub](#).

## **Instructions to load GDA2020 Raster web services to:**

- **ArcGIS Pro** (tested in v2.7.0)  
**Add data > Add data from path** and provide the full MapServer URL, for example:  
[https://portal.spatial.nsw.gov.au/tileservicesGDA2020/rest/services/public/NSW\\_Imagery\\_GDA2020/MapServer](https://portal.spatial.nsw.gov.au/tileservicesGDA2020/rest/services/public/NSW_Imagery_GDA2020/MapServer)
- **Portal viewers** (tested in Spatial Collaboration Portal 10.8.1. My Map Viewer, Spatial Map Viewer)  
**Add data > Add data from Web / URL** and provide the full MapServer URL, for example:  
[https://portal.spatial.nsw.gov.au/tileservicesGDA2020/rest/services/public/NSW\\_Imagery\\_GDA2020/MapServer](https://portal.spatial.nsw.gov.au/tileservicesGDA2020/rest/services/public/NSW_Imagery_GDA2020/MapServer)
- **QGIS** (tested in v3.10)  
**XYZ Tiles > New Connection** and provide the full MapServer URL plus 'tile/{z}/{y}/{x}', for example:  
[https://portal.spatial.nsw.gov.au/tileservicesGDA2020/rest/services/public/NSW\\_Imagery\\_GDA2020/MapServer/tile/{z}/{y}/{x}](https://portal.spatial.nsw.gov.au/tileservicesGDA2020/rest/services/public/NSW_Imagery_GDA2020/MapServer/tile/{z}/{y}/{x})

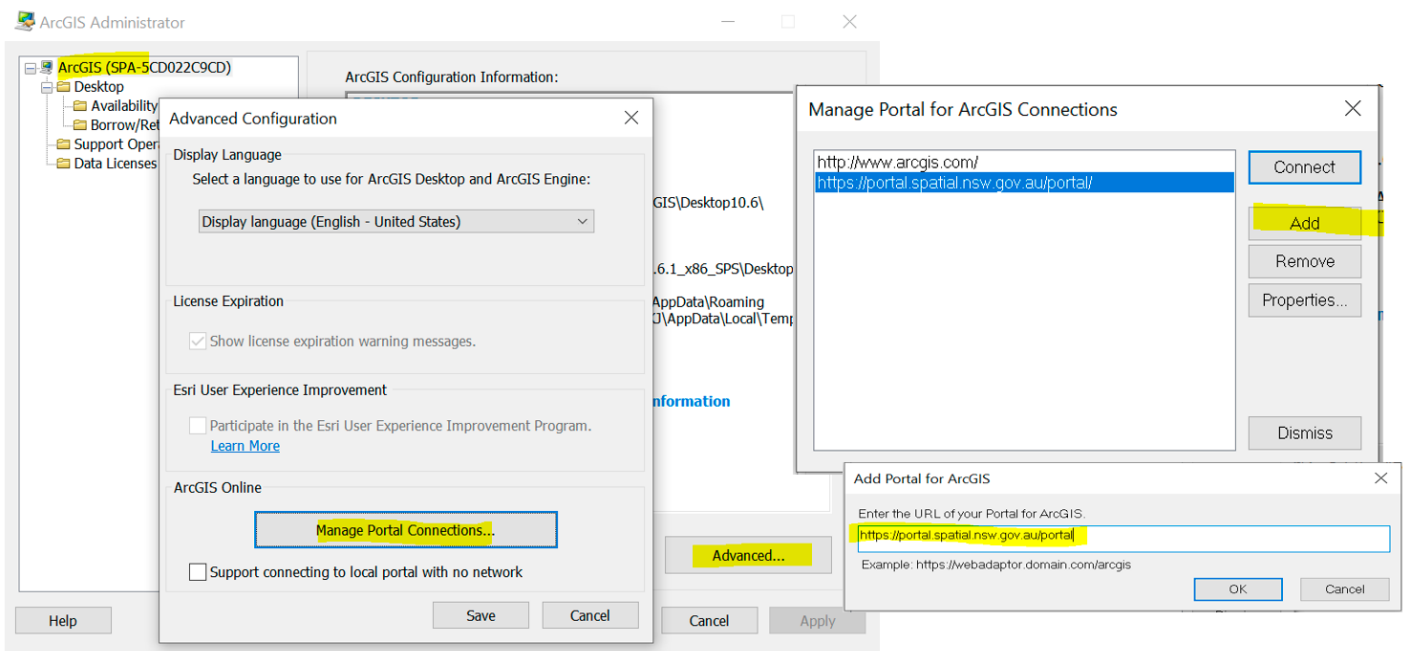
(continued next page)

## • ArcMap

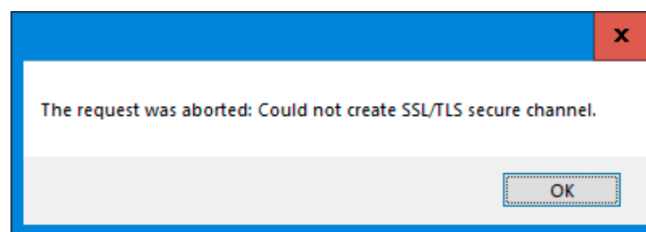
Adding the GDA2020 raster to ArcMap requires a direct connection between ArcMap and the SCP.

### 1) Establish Connection to Spatial Collaboration Portal

Follow the instructions provided at [ESRI Help: Using ArcMap with your Portal](#), to establish a connection between ArcMap and the Spatial Collaboration Portal, using the full URL:  
<https://portal.spatial.nsw.gov.au/portal/>



**Note:** The following encryption-related error “Could not create SSL/TLS secure channel” has been reported by one user while attempting to connect from ArcMap to the portal from a virtual machine. No solution has been identified for this issue at this time. Please report this issue, or similar issues to the Customer Hub (Where can I provide feedback, below)



### 2) From within your ArcMap project, do

- **File > Portal for GIS > Login**  
If you do not already have a login to SCP, and this process does not prompt you to create a new account, then visit <https://portal.spatial.nsw.gov.au> > **Sign In > Create New account**
- Search for desired dataset with SCP.  
**Note:** Items in SCP 'My Content' can also be added to ArcMap in this manner. By this method you can add any URL not currently served directly from SCP.
- **Add (selected dataset)**

### Where can I provide feedback?

We invite stakeholders to test these new services across a wide range of applications, and to provide feedback. Specific feedback on datum-alignment, accessibility and efficiency, and software-specific experiences will all be useful.

Where possible, compare your experience against the equivalent existing WGS 84 ≈ GDA94 services. Feedback is welcomed via the [Spatial Services Customer Hub](#).