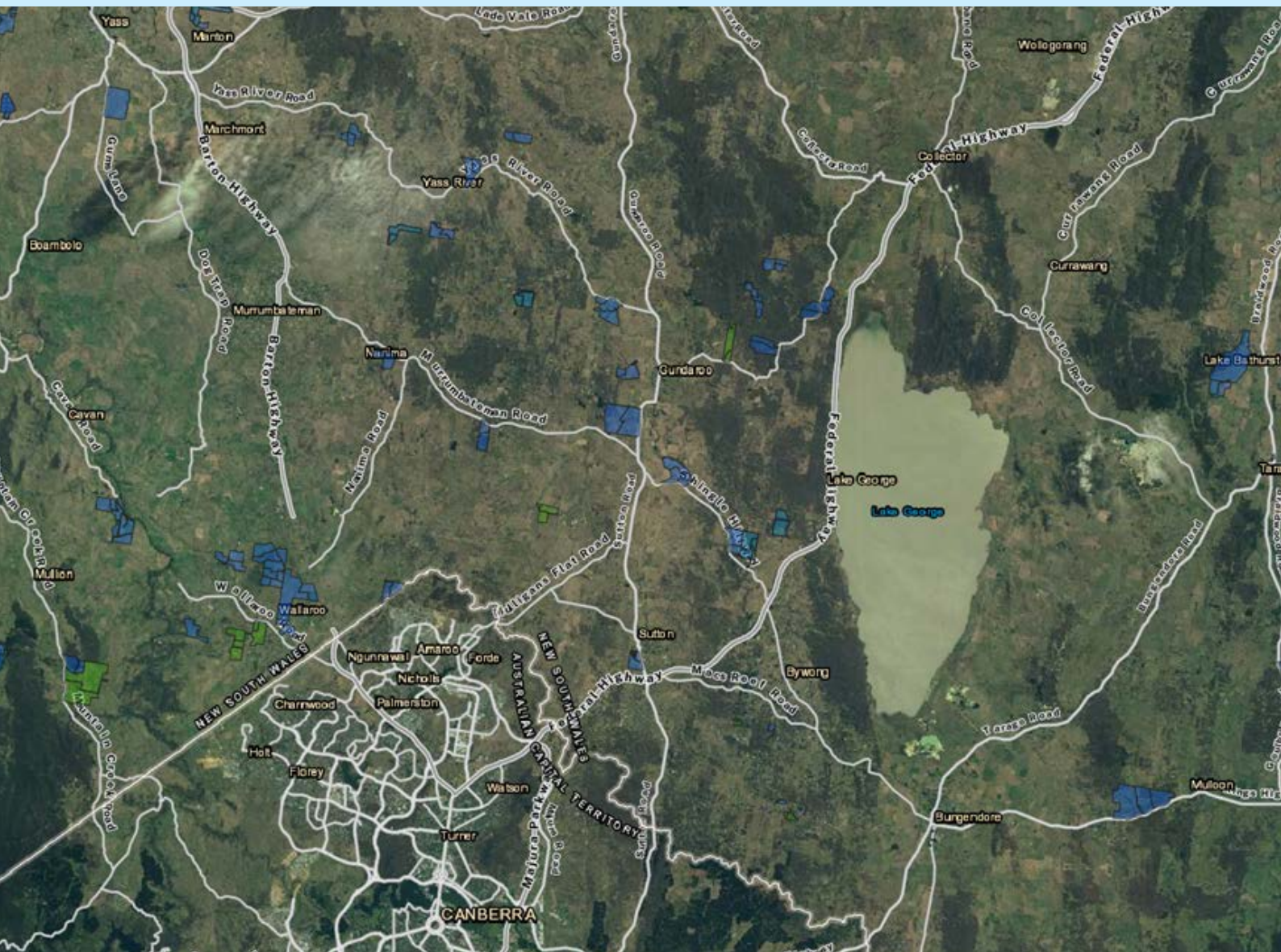


Empowering smarter land supply insights through the NSW Land Subdivision Pipeline

DCS Spatial Services Case Study



Introduction

The Planning Evidence Centre at the Department of Planning, Housing and Infrastructure (DPHI) used NSW Land Subdivision Pipeline data from DCS Spatial Services to deliver the subdivision audit for the NSW [housing supply dashboard](#).

The purpose of this project was to classify subdivision lot activity at a point in time across the 43 LGAs in NSW with housing targets. It provides a clear snapshot of the short and medium-term pipeline of new lots as well as show the number of lots at each stage of the subdivision pipeline at a given point in time.

The [housing supply dashboard](#) brings this information together in an interactive format. It tracks key indicators, including land supply, new homes lodged and approved, and housing completions across NSW.

Challenges

The Planning Evidence Centre at DPHI faced several significant challenges that limited their ability to deliver the platform effectively. Prior to adopting the NSW Land Subdivision Pipeline data, the team at the Planning Evidence Centre did not have a centralised, spatially enabled source of subdivision information. As a result, the team relied on time-intensive, manual processes to compile and prepare the data for reporting and analysis.

This work involved:

- Manually extracting subdivision application data from multiple sources
- Creating spatial polygons for each application in GIS
- Extracting subdivision cadastre data from the Cadastre NSW layer.

Due to the time-extensive data extraction process from multiple data sources, there was uncertainty around data accuracy, completeness and currency. A single, authoritative pipeline for subdivision lot data was required to support the platform effectively.

Addressing these challenges was essential to deliver an accurate, consistent, and trusted view of subdivision activity for customers.

Solution

The NSW Land Subdivision Pipeline addressed the key challenges faced by the Planning Evidence Centre at DPHI in delivering its subdivision audit platform.

The data itself represents the extent of proposed parcels sourced from subdivision-related applications approved through the NSW Planning Portal. The map layer helps people see where subdivision developments are happening across NSW and how they are progressing over time.

The Planning Evidence Centre downloaded the data using the export function in the Spatial Collaboration Portal. This function allowed them to:

- Define areas of interest
- Select the most appropriate export format
- Set the required datum and coordinate system.

These options ensured the data aligned with its intended analytical and reporting use. After downloading and auditing the dataset, the team processed it internally and uploaded it into the dashboard.

Integrating this data pipeline delivered a centralised, consistent and up-to-date subdivision dataset. It replaced fragmented legacy sources and significantly improved the visibility, accuracy and reliability of lot supply information. As a result, the data pipeline instilled greater confidence in the dashboard for DPHI and for their customers.

The subdivision lot data within the pipeline comes from the Land, Parcel and Property theme of the Foundational Spatial Data Framework (FSDF), which DCS Spatial Services maintains and distributes. As an endorsed Core State Digital Asset, NSW Government agencies must use the FSDF datasets where applicable. By leveraging this authoritative data and DCS Spatial Services' expertise, DPHI ensures its platform is underpinned by authoritative spatial data. They also achieved compliance with the [State Digital Asset Reuse Policy](#).

The screenshot displays the Spatial Collaboration Portal interface. At the top left is the NSW Government logo. The main header reads "Spatial Collaboration Portal". A navigation menu includes "Home", "Portal", "Groups", "About", and "Contact", with "Login / Signup" on the right. The breadcrumb trail is "Home > Portal > NSW Land Subdivision Pipeline Production". The main title is "NSW Land Subdivision Pipeline Production" with a "Favourite" icon. On the right, there are four action buttons: "Open Viewer", "Export Data", "Access API", and "Copy URL". The "Highlights" section contains metadata: Custodian (Department of Customer Service, Spatial Services), Access (Public), Content last updated (16 Oct 2025), Update frequency (Daily), Metadata last updated (21 Sep 2023), Format (Hosted feature layer), and Published (08 Jan 2025). The "Categories" section lists "Property and land parcels".

“Access to a centralised, spatially enabled subdivision dataset has significantly improved the efficiency, currency and reliability of our audits. Working with Spatial Services has enabled us to move from manual, resource-intensive processes to a more consistent and scalable approach to monitoring lot supply.”

Planning Evidence Centre, DPHI

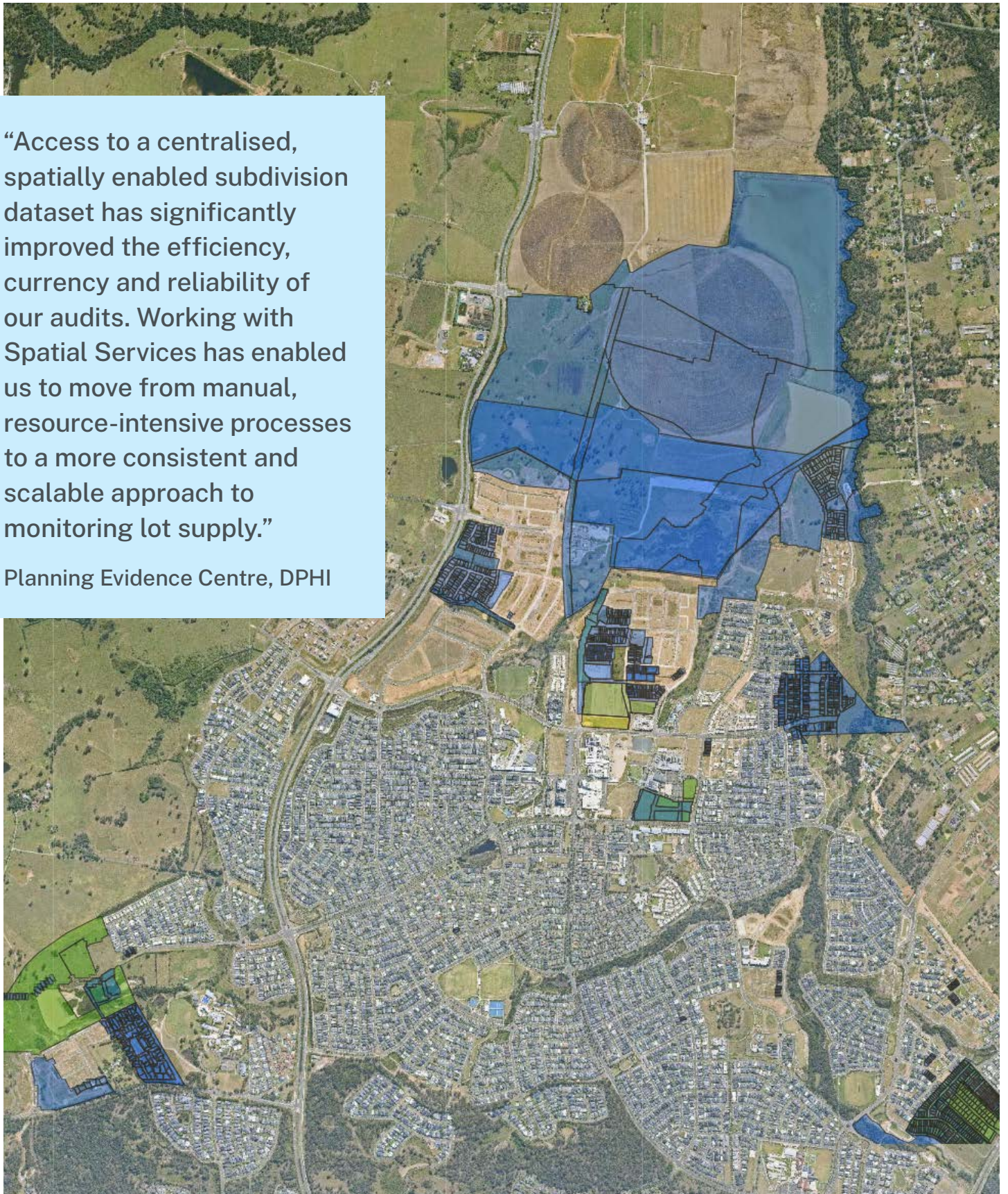


Image: Proposed subdivisions within the Camden Local Government Area.

Project outcomes

The NSW Land Subdivision Pipeline provided a comprehensive solution for DPHI. Integrating this data streamlined the audit process and improved both efficiency and repeatability. The pipeline enabled more frequent and reliable subdivision audits, provided timely and up-to-date insights into subdivision progress and improved data quality and consistency across local government areas.

Based on the delivery of more accurate and consistent lot data through the NSW Land Subdivision Pipeline, the dashboard improved monitoring of housing supply. It now supports evidence-based engagement with councils and industry with more timely insights into short and medium-term land supply.

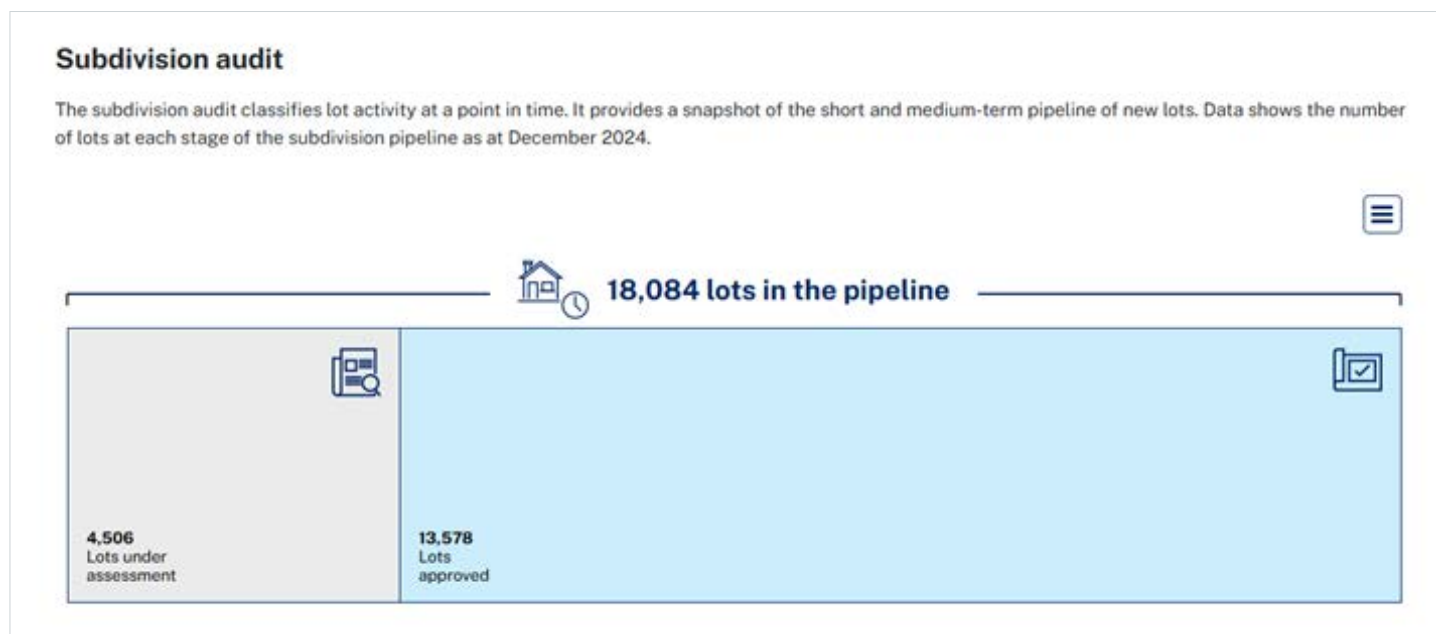


Image: The subdivision audit is featured within the housing supply dashboard – powered by the NSW Land Subdivision Pipeline.

Resources

Access the subdivision audit within the housing supply dashboard:

www.planning.nsw.gov.au/data-and-insights/housing-supply/housing-supply-dashboard

Learn more about the Foundation Spatial Data Framework (FSDF):

www.spatial.nsw.gov.au/what_we_do/what_is_fsdf

Explore the DCS Spatial Services website:

www.spatial.nsw.gov.au

Contact details

Want to learn how spatial data can elevate your next project? Connect with us

www.spatial.nsw.gov.au/contact_us

DCS_41154_26