

ULAN SURFACE OPERATIONS SURVEY BASELINE ACCESS

The purpose of this safety induction is to provide visiting Surveyors a clear understanding of their duties, responsibilities and limitations while accessing and using the Ulan Survey Baseline.

Please read the following carefully before signing below.

Please Tick the Box

1. This site visit is for the purpose of performing a Baseline Calibration as required by the Survey and Drafting Directions for Mine Surveyors 2013 in accordance with Surveyor General's Directions No 5, verification of EDM Equipment.
2. I am logged onto Damstra at Ulan Surface Operations.
3. I will obey any instructions given to me by any Ulan Surface Operations Employee.
4. I will wear safety boots, long sleeve shirt and long trousers. Hat and sunscreen is advisable.
5. I have seen a recent weather report and no storms are expected.
6. I will respect any Flora and Fauna I may encounter.
7. I have been provided all 3 plans generated from MP2013_USO_031.
8. This induction only provides access to the baseline access roads and mowed area of the baseline as shown on Plan3, MP2013_USO_031.
9. I have been given a copy of the JSA "Use of Survey Baseline", dated 3-July-2013.
10. I will carry a signed copy of this form on my person while on Ulan's mine site.
11. I would like to take up the offer to be escorted to the baseline. YES NO
12. I have done a Vehicle inspection and filled in a 103 form with an Ulan employee present. A current fire extinguisher and an operational first aid kit are in my vehicle.
13. I will complete a Take5 with an Ulan employee to identify hazards at the baseline access and baseline area.
14. I will log off from Damstra at the conclusion of my work each day.

Assessor Name: Signature: Date:

Inductee Name: Signature: Date:

Inductee Name: Signature: Date:

Inductee Employer:

Employer Address:

Light Vehicle Registration:

Company Phone Number:

Duration of Restricted Induction:Days

The Ulan Emergency Phone Number is 02 63725555 as per visitors induction.

To contact the Ulan Surface Operations Survey phone 02 63725153

Completion of the document does not allow you to operate any equipment or vehicles on site apart from your company vehicle listed above. A separate equipment authorisation must be signed by the Manager Mining Engineering / Mine Manager prior to operation of any item of equipment.

ULN SD FRM 0088

JOB SAFETY ANALYSIS (JSA) FORM

Use of Ulan Survey Baseline to Verify Survey Instruments required by the Survey and Drafting directions for mine Surveyors 2013.

		Date: 3 July 2013		
		Training required for this activity:	Equipment and PPE required: Safety boots First Aid Kit Fire Extinguisher	
Name of person leading JSA: M. Cunnion	Title: M.M.E.	Signature of person leading JSA: <i>M. J. Cunnion</i>		
Plant or Location: North of Corporate Road	Department: Production	Approved (Supervisor as required): <i>Paul Vermeij "Bruno" Cahel</i>		
Attended by: M. Cunnion; C. Edmeades.				
Critical steps in activity	Potential hazards	Control	Responsibility for controls (name & signature)	
Contact with Ulan Surface Personnel	Not familiar with site and could get lost/confused/go wrong way.	Contact details and maps in Government Web Site	C. Edmeades	
Log on to Damstra	Not knowing company policies	Damstra Visitor Log in	C. Edmeades	
Site Specific Induction	In-appropriate emergency response	Restricted surface induction	C. Edmeades	

Critical steps in activity	Potential hazards	Control	Responsibility for controls (name & signature)
Travel from USO to Baseline	Interact with machinery Interact with people Interact with fauna	Covered by induction. Escort if required Plan supplied for area of permitted access.	C. Edmeades
Flora	Snakes, wombats, deer, pigs, kangaroos, emus, potholes, lack of vision along baseline.	Maintain baseline access area by mowing and flora management. Xstrasafe action for maintenance.	C. Edmeades
Perform Calibration	UV Radiation Weather	Sun block, wide brimmed hat, long long's, check weather.	C. Edmeades
Travel Baseline to USO	Interact with machinery Interact with people Interact with fauna	Escort if required Plan supplied for area of permitted access.	C. Edmeades
Log off Notify USO contact	Not knowing if people have left site.	Damstra, drop into Survey office.	C. Edmeades



BASELINE
GENERAL SITE MAP
PLAN 1 OF 3

Drawn OPE 3rd July 2013
Scale NTS

Drawing No.

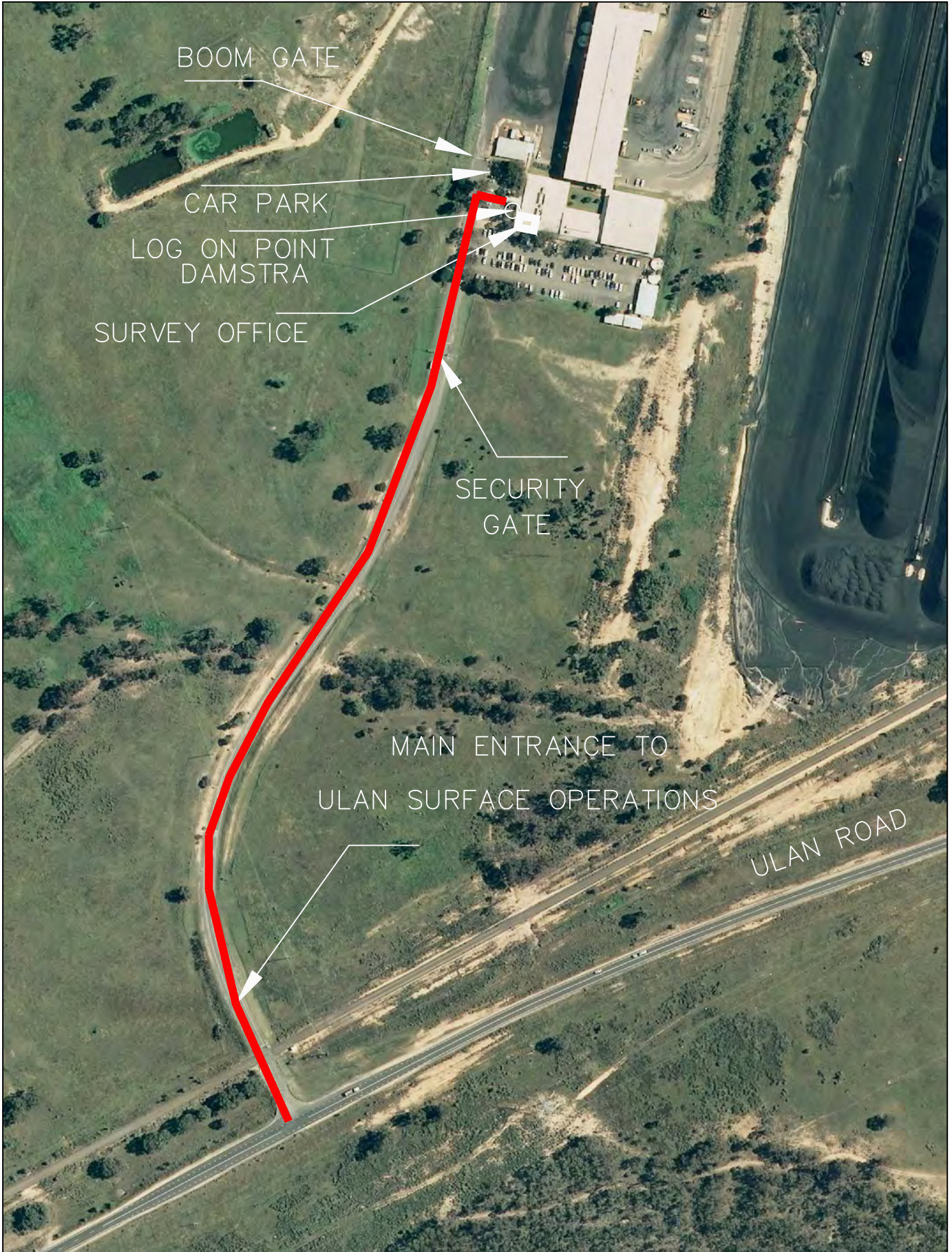


ULAN COAL MINES LIMITED
3935 Ulan Road
ULAN NSW 2850
Postal: Private Mail Bag 3006
MUDGEE NSW 2850



MP2013_USO_031

A4



BASELINE
GENERAL SITE MAP
PLAN 2 OF 3

Drawn OPE 3rd July 2013
Scale NTS



ULAN COAL MINES LIMITED
3935 Ulan Road
ULAN NSW 2850
Postal: Private Mail Bag 3006
MUDGEES NSW 2850



Drawing No.
MP2013_USO_031

A4



BASELINE
GENERAL SITE MAP
PLAN 3 OF 3

Drawn OPE 3rd July 2013
Scale NTS



ULAN COAL MINES LIMITED
3935 Ulan Road
ULAN NSW 2850
Postal: Private Mail Bag 3006
MUDGEES NSW 2850



Drawing No.
MP2013_USO_031

A4