

# The Use of Survey Marks from Deposited Plan of Survey Information Only on Future Survey Plans

## Example Sketches

### Introduction

The purpose of this document is to assist surveyors in preparing and drafting a survey plan when using survey marks from a Deposited Plan of Survey Information Only (DPoSIO). Three worked examples are shown highlighting different scenarios with typical annotation of survey marks.

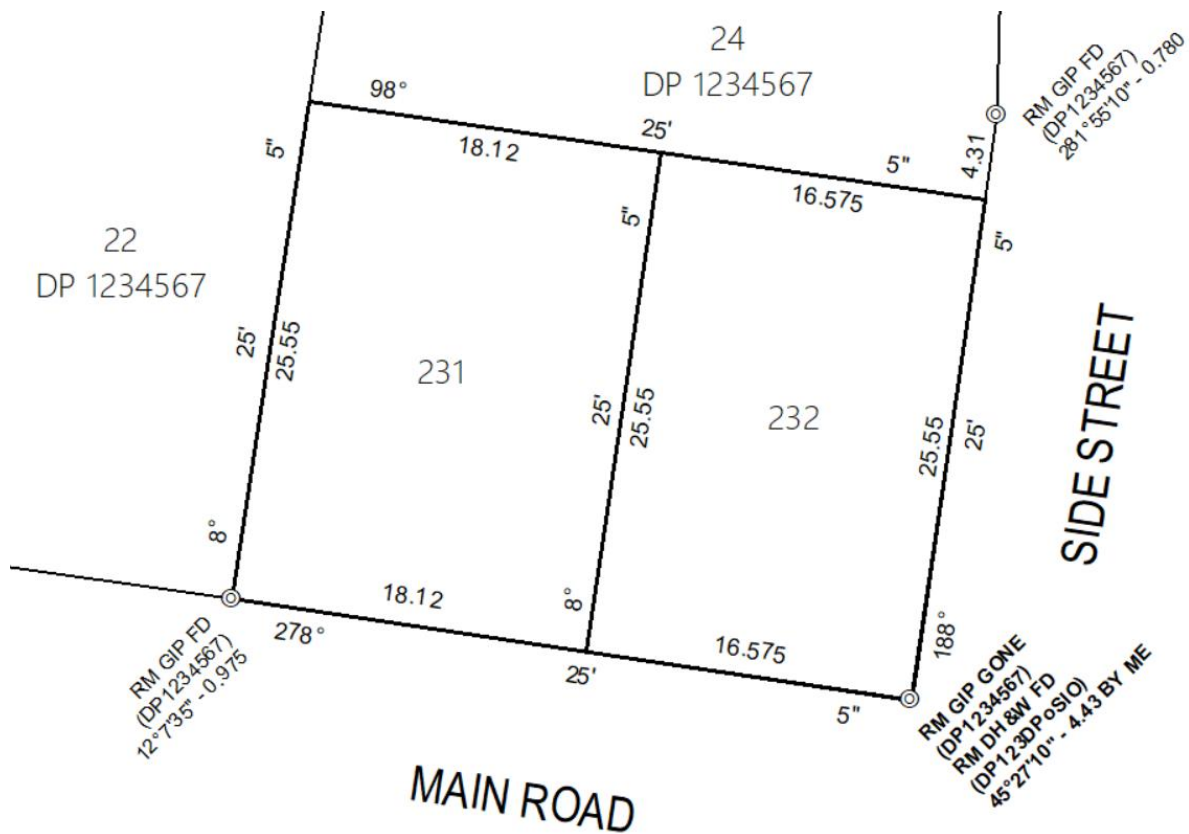
These examples have been prepared in agreement with DCS Spatial Services, Office of the Registrar General and Transport for NSW.

The following sketches are examples only, ultimately it is the responsibility of the registered surveyor to show the best unambiguous description in accordance with applicable regulations and best practice standards.

In drafting these sketches the following assumptions were made:

- DP1234567 refers to the original Deposited Plan
- DP123DPoSIO represents a Deposited Plan of Survey Information Only prepared as a requirement for the removal of a survey mark from DP1234567
- The sketches represent a new survey plan subdividing a lot within of the original plan DP1234567
- The bottom right corner text on each sketch has been bolded intentionally to emphasise the proposed typical annotations for reference marks

If the new survey agrees with the DPoSIO and the survey mark placed in the DPoSIO is within 30 metres of the corner, it can be used to reference the corner.



## Scenario 2 – The surveyor does not agree with the DPOsIO and shows calculations and survey references

If the survey of the new plan does not agree with the DPOsIO and the survey mark placed in the DPOsIO is within 30 metres of the corner, it can be used as a reference as annotated below.



### Scenario 3 – Survey mark from DPoSIO is not within 30 metres

If the survey agrees with the DPoSIO, however, a survey mark placed in the DPoSIO is not within 30 metres of the corner, to avoid asking for an exemption, a new survey mark is placed within 30 metres of the corner. The connection from DPoSIO's survey mark to corner should be shown but, it must not have the prefix RM.

