

## Deposited Plan of Survey Information Only (DPoSIO) Example Sketches

### Introduction

The purpose of this document is to assist surveyors in preparing and drafting a DPoSIO. A worked example DPoSIO is shown highlighting two different approaches with typical connections between survey marks.

All DPoSIOs must satisfy the requirements outlined under the *Surveying and Spatial Information Regulations 2017* ('the Regulation'). Surveyors must refer to relevant sections in Surveyor General's Direction No. 11 and the *DPoSIO Checklist* for additional guidelines and best practice procedures. The *DPoSIO Checklist* can be found in the *POSI Resource Pack* under [Surveyor General's Direction No. 11](#).

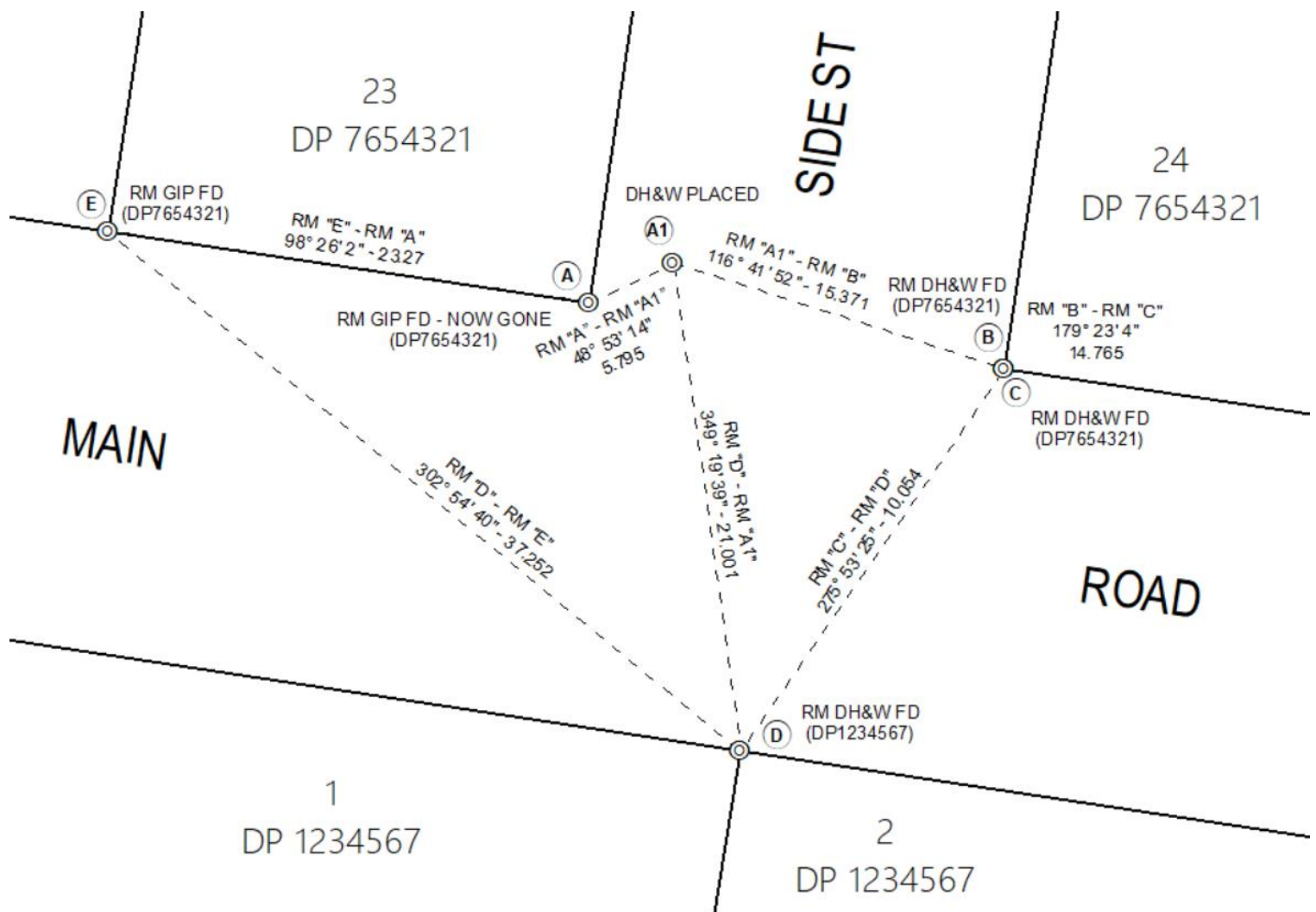
A section of an example DPoSIO is provided below showing 2 different approaches in drafting and showing relevant survey information:

1. DPoSIO Example – Sketch 1 (Original Reference Marks (RMs) Shown at Corners)
2. DPoSIO Example – Sketch 2 (All Survey Marks Shown in Actual Location)

DCS Spatial Services does not recommend a particular approach so long as it is consistent. It is ultimately at the discretion of the registered surveyor preparing the plan, to show information without any confusion on its interpretation.

The two approaches below are suggested to avoid doubt and confusion in identifying the original survey mark reference to the State Cadastre. A DPoSIO must not redefine land parcels or land boundaries.

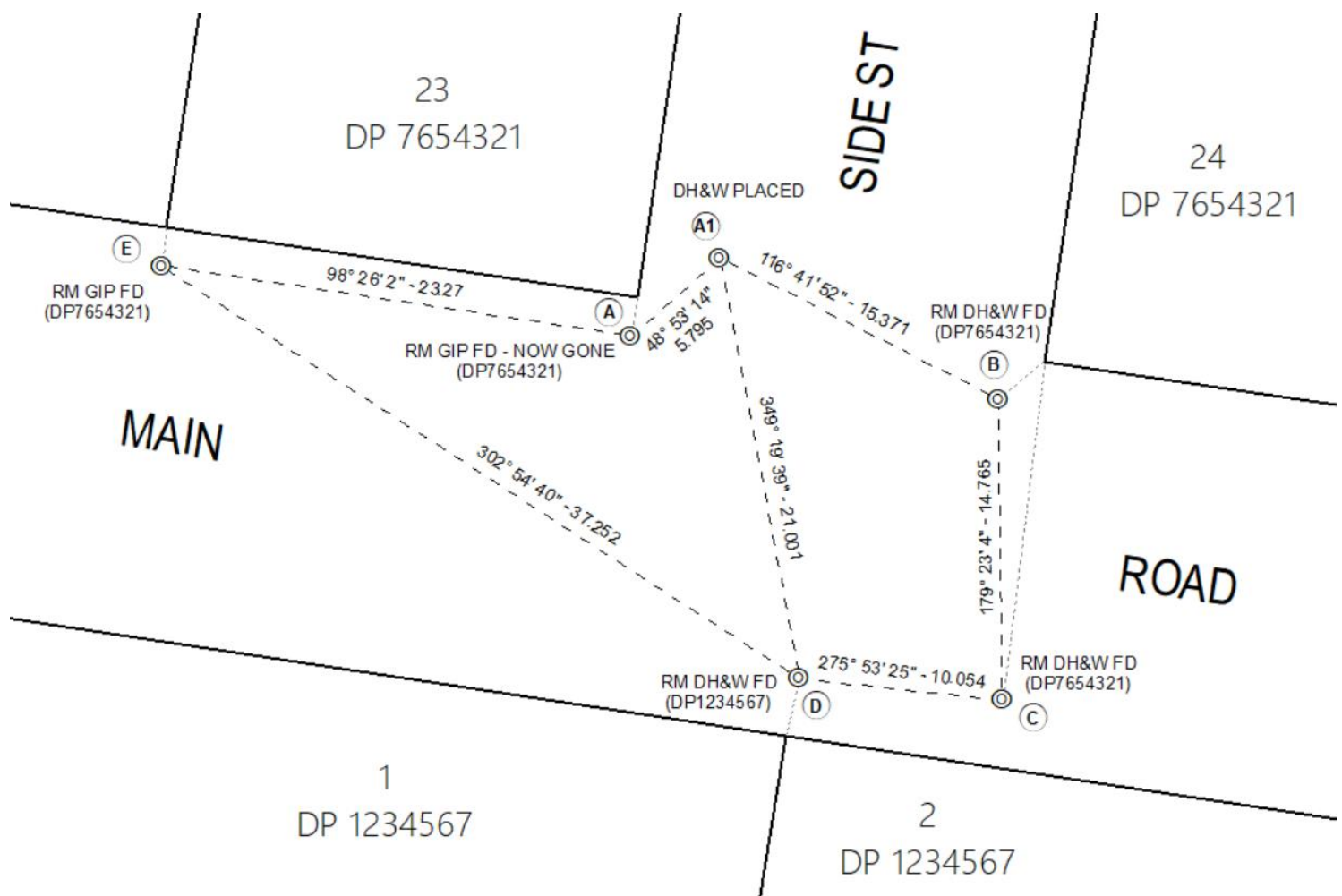
## DPOsIO Example – Sketch 1 (Original RMs Shown at Corners)



### Please note:

- The original RMs are shown at corner as in the original plan.
- Replacement survey marks are shown in actual location.
- Origin and status of all survey marks are stated on the face of plan (or can be tabulated for each sheet).
- All connections between survey marks are closed loops or radiated from 2 stations, shown on the face of plan (or can be tabulated for each sheet).
- The connections should be listed as sequential bearings and distances.
- Connections between survey marks are appropriately annotated when shown on face of plan to avoid confusion on the interpretation (e.g. "RM-RM, PM-RM"). This is to emphasise "mark to mark" connection since a DPOsIO must not redefine any boundaries.
- Conventional symbols as described in Schedule 5 of the *Surveying and Spatial Information Regulations 2017* must be used.
- All survey marks placed must be in the form and style as described in Schedules 1, 3 and 4 of the *Surveying and Spatial Information Regulations 2017*.

## DPOsIO Example – Sketch 2 (All Survey Marks Shown in Actual Location)



### Please note:

- All survey marks are shown in actual location (approximately – symbol can be moved if congested).
- For clarity, a dotted line to the corner from the original survey mark can be shown. The dotted line must not feature any information in the definition of the cadastre. It is only an indication of the original reference.
- Origin and status of all survey marks are to be stated on the face of plan (or can be tabulated for each sheet).
- All connections between survey marks are closed loops or radiated from 2 stations, shown on the face of plan (or can be tabulated for each sheet).
- The connections should be listed as sequential bearings and distances.
- Conventional symbols as described in Schedule 5 of the *Surveying and Spatial Information Regulations 2017* must be used.
- All survey marks placed must be in the form and style as described in Schedules 1, 3 and 4 of the *Surveying and Spatial Information Regulations 2017*.